

## Occupational Safety and Health Administration

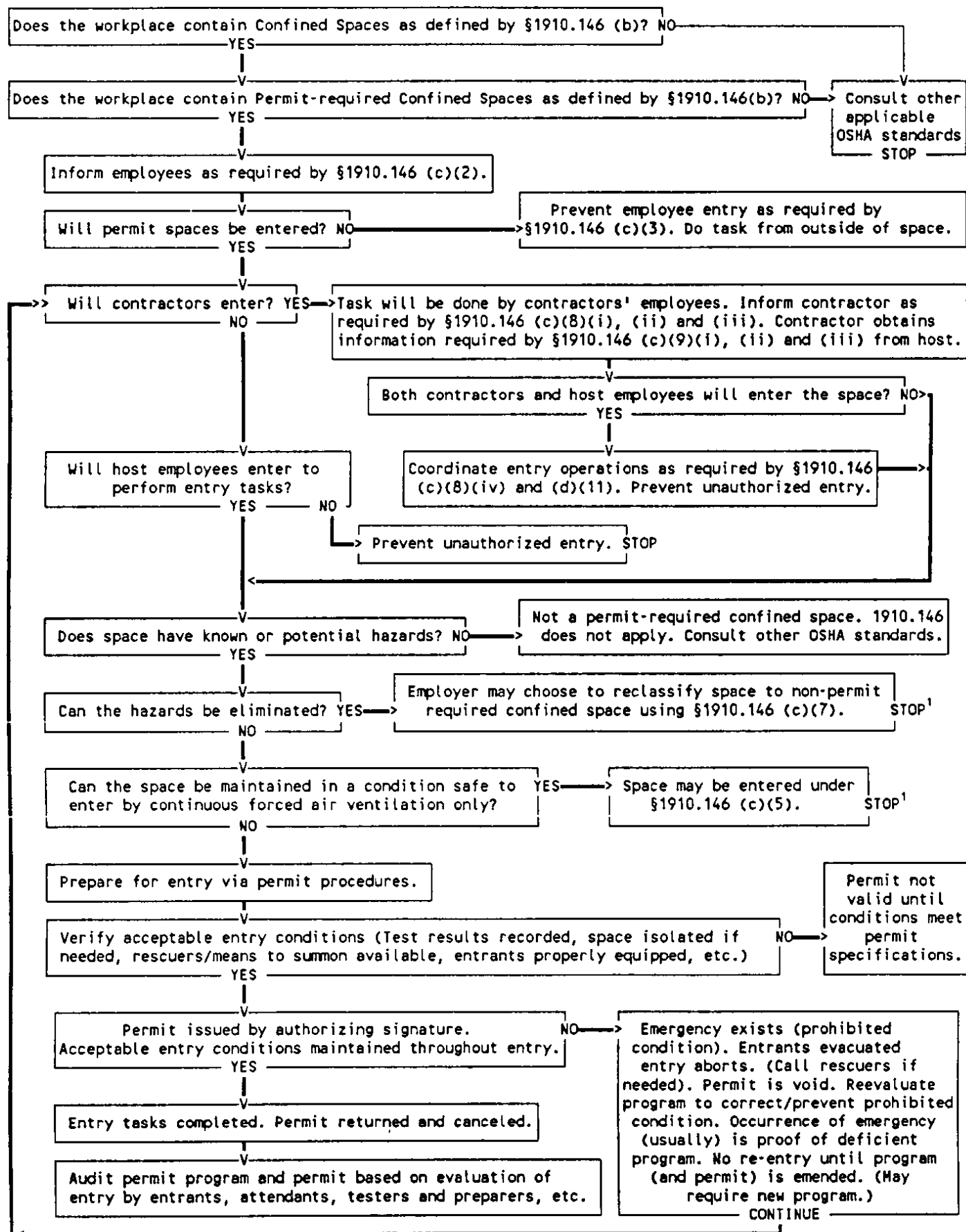
---

- **Part Number:** 1910
  - **Part Number Title:** Occupational Safety and Health Standards
  - **Subpart:** 1910 Subpart J
  - **Subpart Title:** General Environmental Controls
  - **Standard Number:** [1910.146 App A](#)
  - **Title:** Permit-required Confined Space Decision Flow Chart
  - **GPO Source:** [e-CFR](#)
- 

### Appendixes to § 1910.146 - Permit-required Confined Spaces

Note: Appendixes A through F serve to provide information and non-mandatory guidelines to assist employers and employees in complying with the appropriate requirements of this section.

Appendix A to § 1910.146 - Permit-Required Confined Space Decision Flow Chart





## U.S. DEPARTMENT OF LABOR

Occupational Safety and Health Administration  
200 Constitution Ave NW  
Washington, DC 20210  
☎ 1-800-321-OSHA  
1-800-321-6742  
[www.osha.gov](http://www.osha.gov)

### FEDERAL GOVERNMENT<sup>+</sup> OCCUPATIONAL SAFETY & HEALTH<sup>+</sup> ABOUT THE SITE<sup>+</sup>

<a href="#">White House</a>	<a href="#">Frequently Asked Questions</a>	<a href="#">Freedom of Information Act</a>
<a href="#">Benefits.gov</a>	<a href="#">A - Z Index</a>	<a href="#">Disclaimers</a>
<a href="#">Coronavirus Resources</a>	<a href="#">Freedom of Information Act - OSHA</a>	<a href="#">Plug-ins Used on DOL.gov</a>
<a href="#">Disaster Recovery Assistance</a>	<a href="#">Read The OSHA Newsletter</a>	<a href="#">Accessibility Statement</a>
<a href="#">DisasterAssistance.gov</a>	<a href="#">Subscribe to the OSHA Newsletter</a>	
<a href="#">USA.gov</a>	<a href="#">OSHA Publications</a>	
<a href="#">Notification of EEO Violations</a> <a href="#">Office of Inspector General</a>		
<a href="#">No Fear Act Data</a>		
<a href="#">U.S. Office of Special Counsel</a>		

Connect With OSHA



[Site Map](#) | [Important Website Notices](#) | [Privacy & Security Statement](#)